

Overall wire alignment diagram

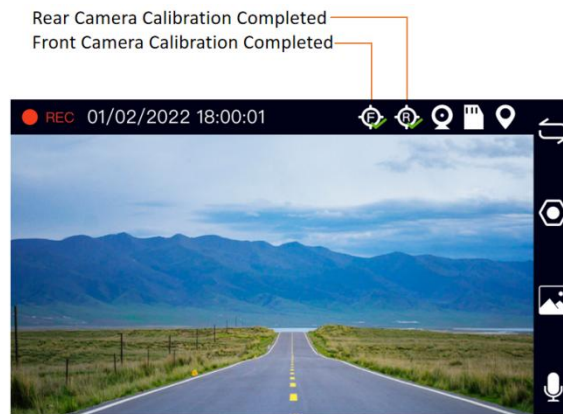
4 AI Functions

4.1 Auto-calibration

When AI Dash Cam works on a running vehicle for the first time, it will turn on the auto-calibration function. The calibration will complete in about 5 minute when the following conditions are met.

- (1) Driving on a straight, level road with clear lane lines.
- (2) The vehicle speed is more than 13mph(20km/h);
- (3) There are few vehicles on the road.
- (4) Try not to change lanes.

After the calibration, the calibration icons on the status bar will be check. The first calibration may take a long time, please be patient. After the first calibration is completed, the device will continue to learn and adjust.



4.2 Lane Departure Warning

When current Vehicle speed > 40mph(60km/h) and the lane-center-driving vehicle state is changing to across the lane, the AI system will issue related sound alert to driver and display alert icon on the dash cam screen.



Lane Departure Warning

Note: Normal lane changing will also trigger this warning, this alarm can be turned off in the AI function settings.

4.3 Forward Collision Warning

When current Vehicle speed > 20mph(30km/h) and the Time to Collision(TTC) between the vehicle and the vehicle ahead is less than 2.7s, the AI system will issue related sound alert to driver and display alert icon on the dash cam screen.



Forward Collision Warning

4.4 Virtual Bumper

When the distance between the vehicle and the vehicle ahead / Current vehicle speed $< 0.7S$, and $20\text{mph}(30\text{km/h}) > \text{Current vehicle speed} > 0.6\text{mph}(1\text{km/h})$, the AI system will issue related sound alert to driver and display alert icon on the dash cam screen.



Virtual Bumper

4.5 Pedestrian Collision Warning

When the distance between the vehicle and the pedestrian ahead / Current vehicle speed $< 1.2S$, and $40\text{mph}(60\text{km/h}) > \text{Current vehicle speed} > 0.6\text{mph}(1\text{km/h})$, the AI system will issue related sound alert to driver and display alert icon on the dash cam screen.



Pedestrian Collision Warning

4.6 Stop & Go

When the vehicle stops for more than 5s and the vehicle ahead(within 20ft distance) continues to driving away for more than 1s, the AI system will issue related sound alert to driver and display alert icon on the dash cam screen.



Stop & Go

4.7 Lane Changing Assistance

Level 1 Alert: If the velocity of vehicle $> 6\text{mph}(10\text{km/h})$, while another vehicle (within 23ft distance) is approaching from the rear-side lane, the AI alert will be triggered.

(1) The LED indicator light will be solid on to remind the driver. The faster the speed, the farther the alarm can be triggered, up to 41ft.

(2) When there is a car on your left rear, the orange LED on the left will be on, and when there is a car on your right rear, the green LED on the right will be on.



Level 2 Alert: If the velocity of vehicle $> 20\text{mph}(30\text{km/h})$ with its outer edge of wheel less than 0.32ft from the lane line, another vehicle (within 23ft distance) is approaching from the rear-side lane at the same time, the AI alert will be triggered.

(1) the related LED indicator light will be solid on;

(2) the sound alert will be issued every 3s;

(3) the alert Icon(side-view mirror) will display on the dash cam screen. The faster the speed, the farther the alarm can be triggered, up to 41ft .



Lane Changing Assistance

Note: This alarm will be triggered by a car on the left rear or right rear even when you have no intention to change lanes. This alarm can be turned off in the AI function settings.

4.8 Rear Collision Warning

If the on-driving vehicle > 20mph(30km/h), the Time to Collision(TTC) between the vehicle and the vehicle behind is less than 2.7s, the AI system will issue related sound alert to driver and display alert icon on the dash cam screen.



Rear Collision Warning